



**2008 KAUA'I RENEWABLE
ENERGY CONFERENCE
SEPTEMBER 8, 2008**



Mission Statement

As a kama`aina company, Grove Farm is committed to leading Kaua`i's community and economic development, while being a responsible steward of its aina.

Vision Statement

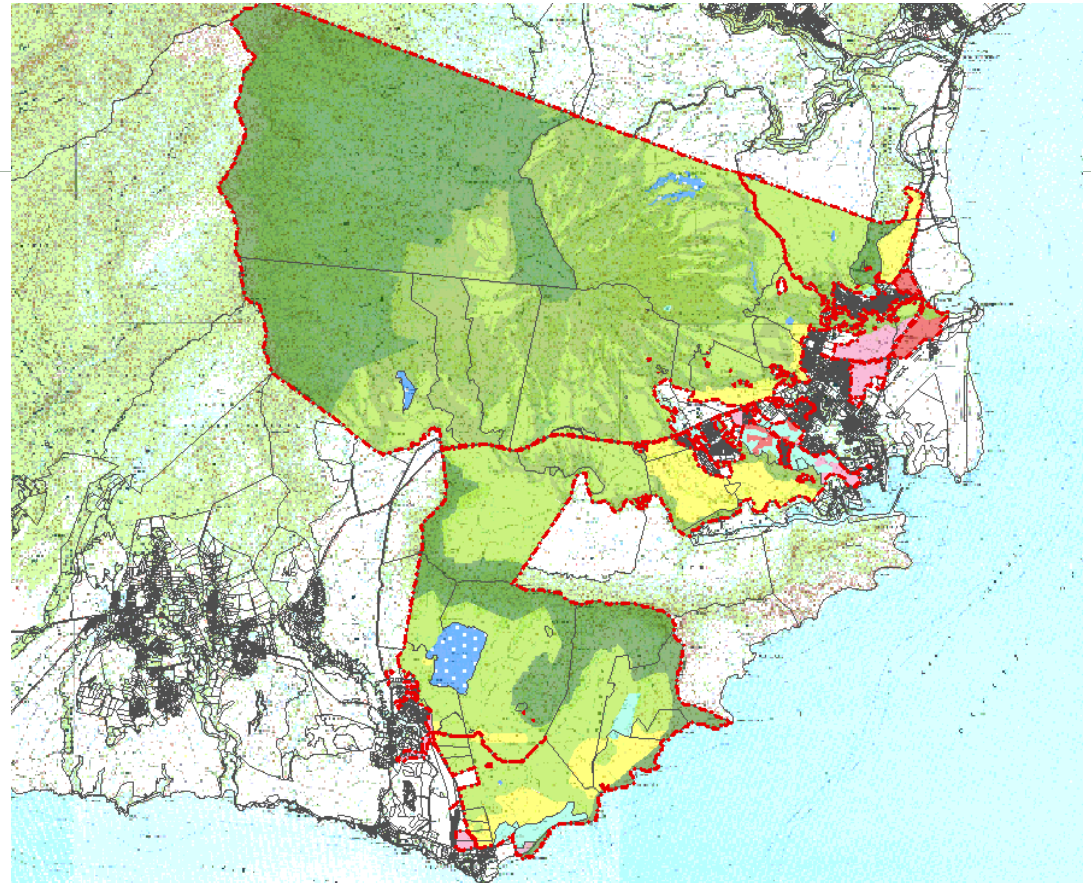
In its transition from a sugar plantation to progressive community and economic development firm, Grove Farm is a leader in social entrepreneurship and island-enhancing initiatives. By remaining kama`aina-focused, Grove Farm enhances Kaua`i's communities through a holistic approach to development and is deeply committed to preserving the island's cultural and historical linkages.



Land Resources



Approx. 40,000 acres





Business Segments

- Projects
- Diversified Agriculture
- **RENEWABLE ENERGY**
- Infrastructure Development
- Community Development
- Business Ventures
- Social Entrepreneurship



Renewable Energy

- Hawaii BioEnergy
- Algae for Biodiesel & Jet Fuel
- Hydroelectric
- Solar Powered Energy (SOPOGY)
- Photovoltaic (PV) Solar Power
- Solar Powered Street Lights – Employee Parking Lot
- Wind



CHALLENGES

- Financial Feasibility
 - **POWER PURCHASE AGREEMENTS – KIUC**
 - Interconnectivity with the grid
 - » Intermittency requires solutions such as energy storage which is expensive and increase costs.
 - Scale
 - Financing
 - LAND
 - Development Costs
- Permitting
 - Timeline and costs
 - No formal Renewable Energy permitting process or procedures
 - EAS/EIS
 - Unknown requirements or conditions placed on project
- Environmental Challenges
 - Particularly challenging for Hydro and Wind



HAWAI`I BioEnergy

- International consortium led by three of Hawai`i's largest landowners
 - **Grove Farm Company**
 - **Maui Land & Pineapple Company**
 - **Kamehameha Schools**
 - **Pierre Omidyar, Founder of Ebay**
 - **Vinod Kholsa, Founder of SunMicro Systems**
 - **Finistere, San Diego/New Zealand Bio Research Firm**
- Actively researching Algae and other potential fuel crops
 - www.hawaii.bioenergy.com