

Kauai Wind Power

September 2008



firstwindSM

firstwind. | **Wind Power Today**

- Wind-generated energy has become a robust industry, both technology mature and financially viable.
- Wind power is 100% renewable, can help decrease reliance on fossil fuels, requires no shipping, causes no emissions, and hedges against rising oil prices.
- State of Hawaii has robust wind resource and now has 4 wind farms.



First Wind's Record

- First Wind takes environmental, cultural and community concerns seriously.
- Kaheawa Wind Power (KWP) has what we believe to be the first Habitat Conservation Plan for an operating wind farm in the United States.
- KWP has a small operations staff including 2 full-time biologists and 2 part-time technicians, implementing the HCP, monitoring endangered species and replanting native plants on site.
- First Wind utilizes KWP as an educational asset for students, community members and policymakers.
- First Wind works closely with Native Hawaiian organizations and sponsors many events and community groups.



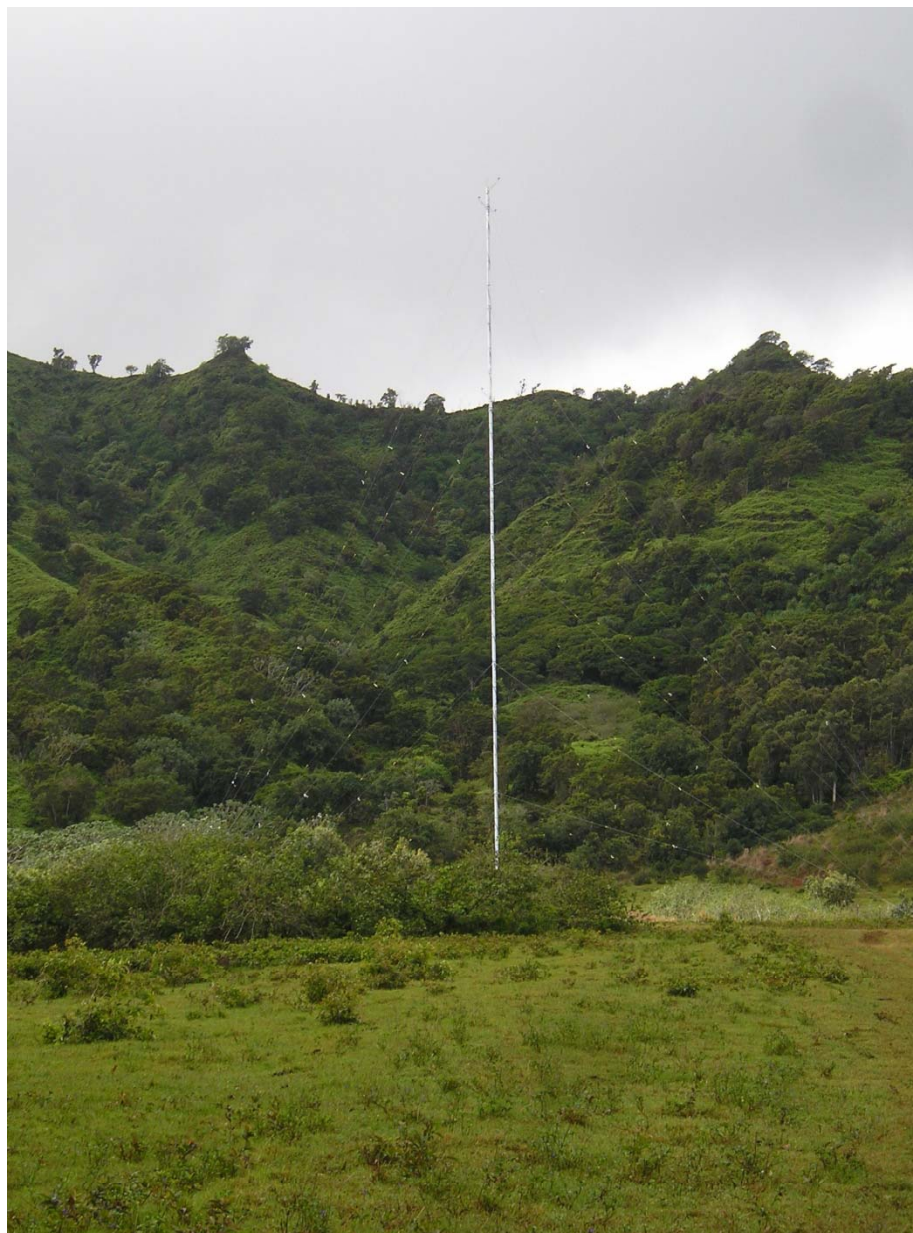
- Community Outreach – ongoing
- Site Selection
- Data Collection
- Environmental Studies and Permitting
- Interconnection Requirements Study
- Power Purchase Agreement
- Construction
- Commissioning

Kauai Wind Power - History

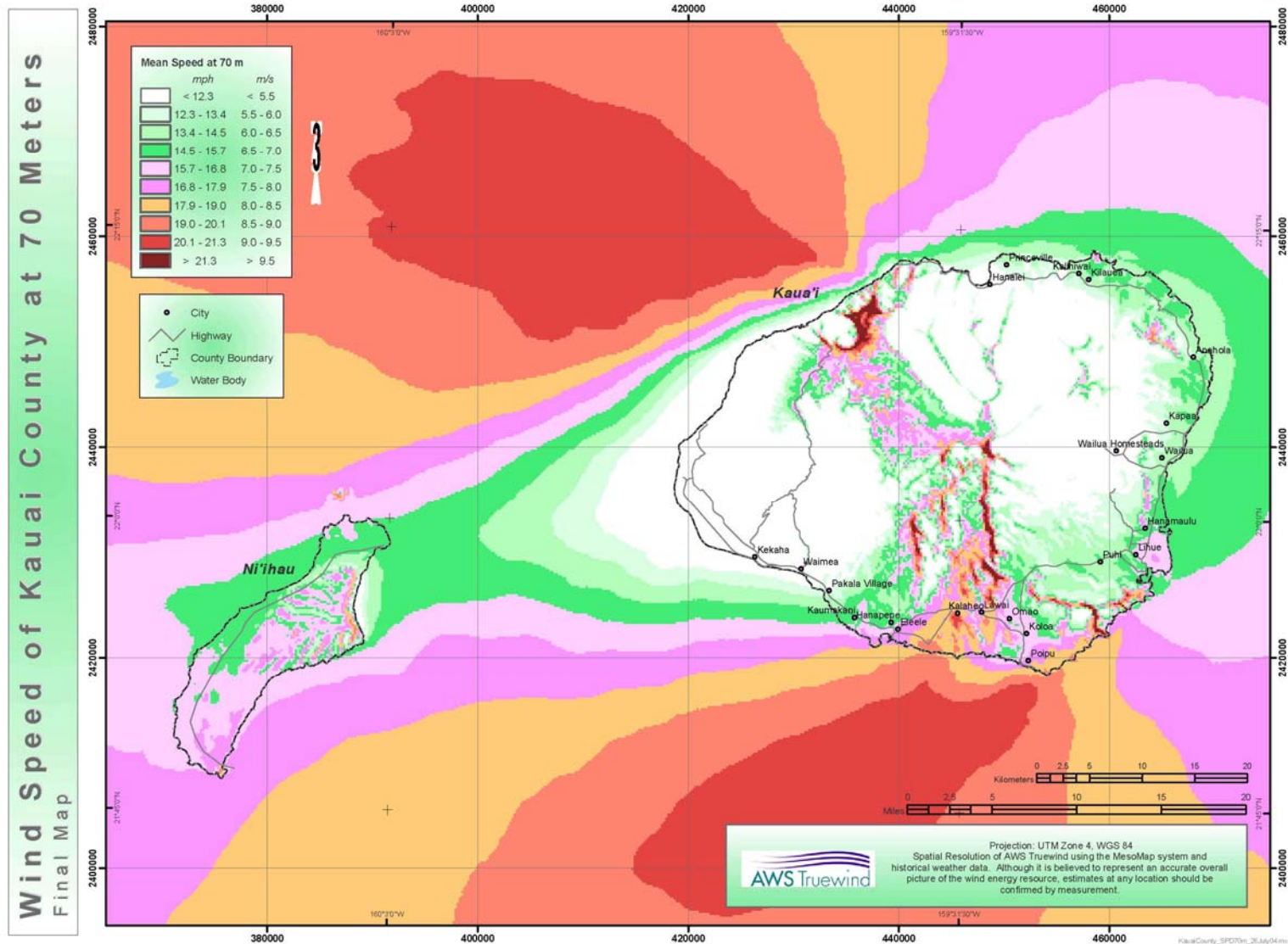
- 2006 - Won KIUC RFP to provide wind energy to Kauai grid
- 2006 – Began community outreach
- 2006 – Began negotiations with land owners
- 2007 – Established Kauai Wind Power Advisory Council
- 2007 – Selected Moloa`a as site and received approval from Hawaiian Homes Commission and executed agreement with Anahola Hawaiian Homestead Association
- 2007- Installed Met Towers
- 2008 – Met Towers taken down – avian concerns and wind resource not sufficient for utility scale wind farm
- 2008 – Planning roundtable discussion to discuss siting issues with goal to have met towers up by December 2008

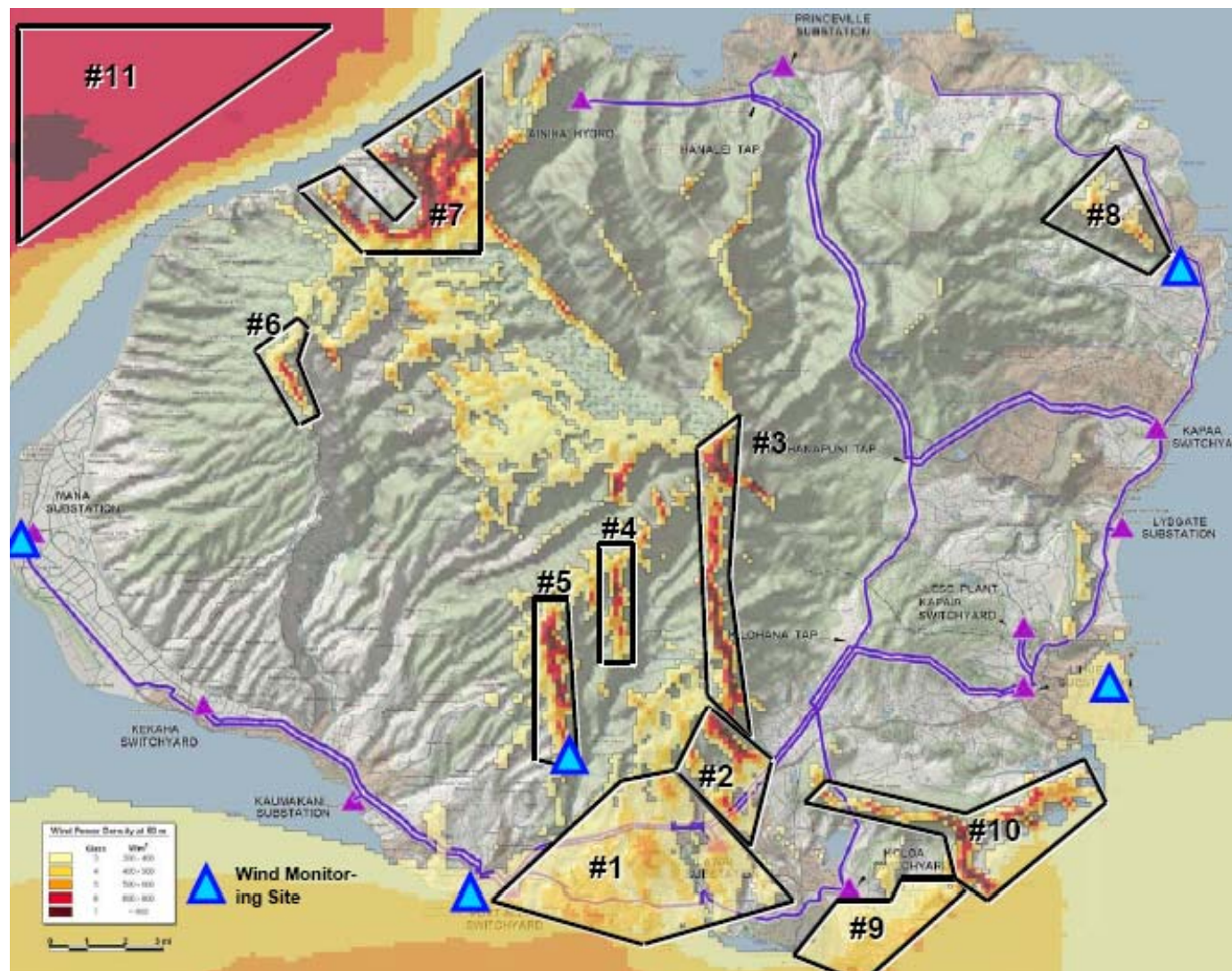
Site Selection Criteria

- Amount of wind
- Site Accessibility
- Access to existing transmission lines
- Cultural and archaeological sites
- Environmental issues
- Cooperative Land owner
- View shed and community concerns



Wind Map at 70M





- Avian Issues : finding ways to provide a net benefit to endangered species
- Isolated and sensitive electric grid makes ancillary services including storage necessary
- Landowners
- Transmission and Access to sites
- View shed issues

- Community participation and involvement
 - Kauai Wind Power Advisory Council
 - Roundtable discussion
- Partnering with KIUC
- Continuing positive dialogue with USFWS, DOFAW, and avian advocates
- Working with County and State officials
- Continuing to utilize cutting-edge technology to address challenges associated with isolated , sensitive island grid



Contact Information

First Wind
33 Lono Avenue, Ste. 389
Kahului, HI 96732
808-873-0111

www.firstwind.com
www.kaheawa.com

- Mike Gresham
Vice-President, First Wind
mgresham@hawaii.rr.com
808-298-1055
- Noe Kalipi
Director, Government & Community Relations
First Wind
nkalipi@firstwind.com
808-344-0211
- Wren Wescoatt
Development Specialist, First Wind
wren.wescoatt@gmail.com
808-780-1000